

About Serenergy

Serenergy is a leading developer and manufacturer of fuel cell stacks and power systems based on the High Temperature PEM fuel cell technology. The company was founded in 2006 and today employs more than 50 highly skilled people. Serenergy has its headquarter in Aalborg (Denmark) but also significant activities at our partner company Fischer Group in Achem (Germany). Serenergy provide everything from fuel stacks and systems for OEM integration all the way to providing complete turnkey solutions for diesel generator replacement. Key value propositions of our methanol power solutions are:

- Typically 15-60% fuel cost savings compared to diesel generator
- Complete system efficiency of up to 50%
- 50-65% CO2 reduction compared to diesel genset
- No harmful emissions (NOX or particle)
- No (Low) noise (<62dB)

H3 2500/5000

Customer defined options

- Enclosure or rack-mount type
- 2.5 or 5kW system power output

Benefits

- Lower life cycle costs
- Low fuel costs
- Zero or low emission
- Scalable and modular
- Efficiency +45%
- No preventive maintenance
- Simple installation and autonomous operation



Features

- Outdoor installation
- DC or AC power
- Load following
- Remote monitoring
- 19 inch rack mount

Applications

- Telecommunication towers
- Off-grid or extended backup
- Emergency
- Micro grids
- Critical systems backup

Product specifications

- 266 mm x 483 mm x 702 mm (10.47" x 19.02" x 27.64")
- 65-75 kgs (143.5-165.6 lbs)
- Ambient temperature: -20 to +50°C

H3 Outdoor Cabinet

Customer defined options

- Enclosure or rack-mount type
- 2.5 or 5kW system power output

Benefits

- Methanol fuel cell solution
- 2.5-10kW – 48V DC
- No preventive maintenance
- 200 L fuel capacity
- Climate independent operation
- Simple installation and refueling

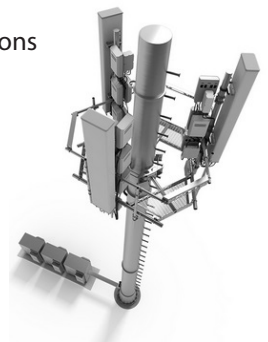


Features

- Outdoor and rooftop installations
- Remote monitoring

Applications

- Telecommunication towers
- Off-grid extended backup
- Emergency
- Micro-grids
- Critical system backup



Product specifications

- 850 mm x 1250 mm x 1500 mm (334" x 492" x 590")
- 235/520-605 kgs (518.1/ 1146,4- 1333,8 lbs)
- Ambient temperature: -20 to +50 °C
- Fuel: M60 (60% methanol, 40% water)